

11110/ALL
Buyline 2134

UniMac

**UW Model Washer-Extractor
UC Model Washer-Extractor
UF Model Washer-Extractor
Foundation Requirements
Drying Tumblers**

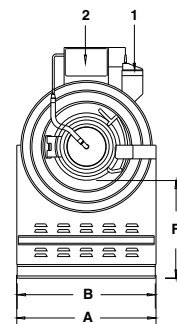


Expert Solutions from the Laundry Experts

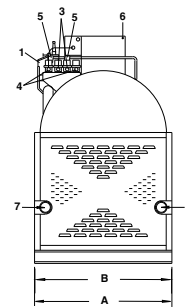
UW Model Washer-Extractors: Our best selling model selected by medium and high volume laundries placing more emphasis on lowering operating costs.

UW Models	UW35PV (7 speed)	UW60PV (7 speed)	UW80PV (7 speed)	UW100PV (7 speed)	UW125PV (7 speed)
Dry Weight Capacity	35 lb. 16 kg	60 lb. 27 kg	80 lb. 36 kg	100 lb. 45 kg	125 lb. 56.7 kg
Cylinder Size inches (mm)	26.25" x 18.37" (667 x 467)	32 x 20 (813 x 508)	36 x 21 (914 x 533)	36 x 27 (914 x 686)	42 x 24 (1067 x 610)
Cylinder Volume	5.76 cu. ft. 163 liters	9.31 cu. ft. 264 liters	12.40 cu. ft. 350 liters	15.9 cu. ft. 450 liters	19.24 cu. ft. 544 liters
Medium Speed RPM / G-Force	325 / 39 G's	305 / 42 G's	325 / 54 G's	325 / 54 G's	260 / 40 G's
High 1 Extract RPM / G-Force	474 / 85 G's	435 / 85 G's	408 / 85 G's	408 / 85 G's	380 / 85 G's
High 2 Extract RPM / G-Force	610 / 140 G's	555 / 140 G's	523 / 140 G's	523 / 140 G's	485 / 140 G's
High 3 Extract RPM / G-Force	795 / 235 G's	720 / 235 G's	671 / 230 G's	601 / 184 G's	580 / 200 G's
Recommended Electrical Service*	15 amps	15 amps	25 amps	25 amps	60 amps
Net Weight	1030 lb. 468 kg	1300 lb. 590 kg	1730 lb. 785 kg	1770 lb. 805 kg	2420 lb. 1100 kg
DIMENSIONS					
A - Overall Width	32.5" 826 mm	36.62" 930 mm	41.5" 1054 mm	41.5" 1054 mm	52" 1321 mm
B - Frame Width	30.12" 765 mm	35.62" 905 mm	41.12" 1045 mm	41.12" 1045 mm	48" 1219 mm
C - Overall Depth	43.62" 1080 mm	45" 1143 mm	51.5" 1308 mm	54.5" 1384 mm	58" 1473 mm
D - Frame Depth	36" 914 mm	36" 914 mm	43.75" 1111 mm	43.75" 1111 mm	48" 1219 mm
E - Overall Height	55.5" 1410 mm	64.5" 1638 mm	68.5" 1740 mm	68.5" 1740 mm	72" 1829 mm
F - Height of Door Bottom	23.81" 605 mm	28.25" 718 mm	29" 737 mm	29" 737 mm	29" 737 mm

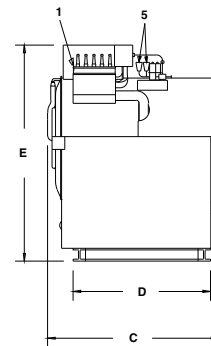
* Recommended electrical service based on 208-240/60/3. Consult factory for other voltages.



FRONT VIEW



REAR VIEW



SIDE VIEW

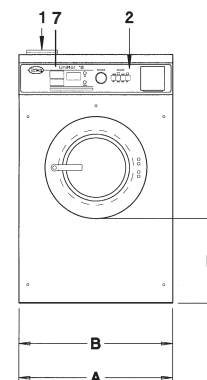
Components:

1. Supply Compartment
2. Controls
3. Cold Water Inlet
4. Hot Water Inlet
5. Vacuum Breaker
6. Electrical Connection
7. Drain Outlet
8. Drain Outlet (Dual drain on 80, 100 & 125)

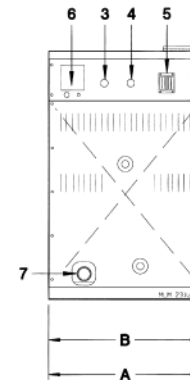
UC Model Washer-Extractors: Our economy models selected by low volume laundries placing less emphasis on operating costs than machine costs.

UC Models	UC18 (2 speed)	UC27 (2 speed)	UC35 (2 speed)	UC50 (2 speed)	UC80 (6 speed)
Dry Weight Capacity	18 lb. 8 kg	27 lb. 12 kg	35 lb. 16 kg	50 lb. 23 kg	80 lb. 36 kg
Cylinder Size inches (mm)	21" x 13.75" (533 x 349)	24" x 16" (610 x 406)	26.25" x 18.37" (667 x 467)	30" x 20" (762 x 508)	36" x 22" (914 x 559)
Cylinder Volume	2.76 cu. ft. 78 liters	4.19 cu. ft. 118 liters	5.76 cu. ft. 163 liters	8.18 cu. ft. 232 liters	12.96 cu. ft. 365 liters
Distribution Speed	N/A	N/A	N/A	N/A	63
Extract Speed	525 RPM	480 RPM	470 RPM	450 RPM	524 RPM
G-Force	82 G's	78 G's	82 G's	86 G's	40/85/140 G's
Recommended Electrical Service*	15 amps	15 amps	20 amps	20 amps	20 amps
Net Weight	390 lb. 177 kg	495 lb. 225 kg	650 lb. 295 kg	820 lb. 373 kg	1406 lb. 633 kg
DIMENSIONS					
A - Overall Width	26" 660 mm	29" 737 mm	30.12" 765 mm	34.06" 865 mm	41.5" 1054 mm
B - Frame Width	26" 660 mm	29" 737 mm	30.12" 765 mm	34.06" 865 mm	41.5" 1054 mm
C - Overall Depth	29.68" 754 mm	35" 889 mm	38.5" 978 mm	42" 1067 mm	51.62" 1311 mm
D - Frame Depth	25.43" 645 mm	30.5" 775 mm	34" 865 mm	37.5" 953 mm	47.5" 1207 mm
E - Overall Height	42" 1067 mm	45" 1143 mm	47.25" 1200 mm	49.75" 1265 mm	56" 1422 mm
F-Height of Door Bottom	14.37" 365 mm	14" 356 mm	16" 410 mm	13.5" 343 mm	17.75" 451 mm

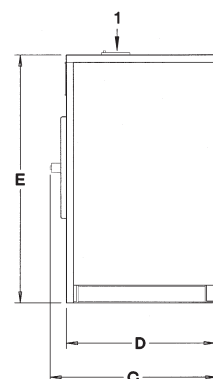
* Recommended electrical service based on 208-240/60/3 amp. Consult factory for other voltages.



FRONT VIEW



REAR VIEW



SIDE VIEW

Components:

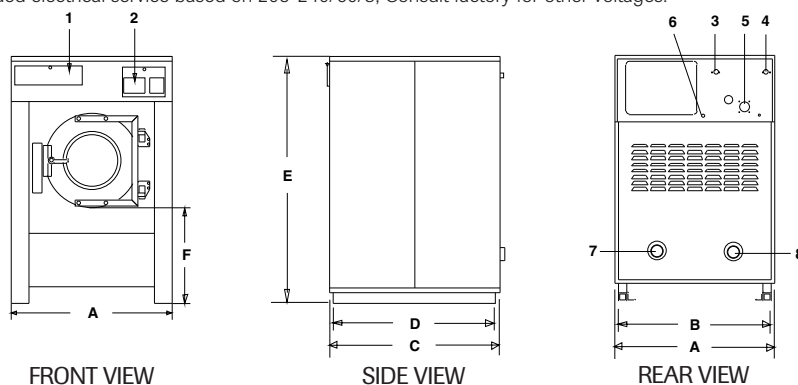
1. Supply Dispenser
2. Controls
3. Cold Water Inlet .75"
4. Hot Water Inlet .75"
5. Electrical Power Connection
6. Drain Outlet
7. Operating Instructions

UF Model Washer-Extractors: Specially designed for foundationless installations in medium to high volume laundries.

11110/ALL
Buyline 2134

UF Models	UF18	UF25	UF35	UF50	UF85	UF135	UF250
Dry Weight Capacity	18 lb. (8 kg)	25 lb. (12 kg)	35 lb. (16 kg)	50 lb. (23 kg)	85 lb. (40 kg)	135 lb. (60 kg)	250 lb. (110 kg)
Cylinder Size (inches) (mm)	21" x 13.75" (533 x 349)	24" x 16" (610 x 406)	26.25" x 18.37" (668 x 467)	30" x 20" (762 x 508)	36" x 24" (914 x 610)	43" x 25" (1092 x 635)	52" x 32" (1321 x 813)
Cylinder Volume	2.76 cu. ft. 78 liters	4.19 cu. ft. 119 liters	5.79 cu. ft. 164 liters	8.18 cu. ft. 232 liters	14.1 cu. ft. 398 liters	21 cu. ft. 591 liters	39.3 cu. ft. 1107 liters
Medium Extract RPM / G-Force	N/A	N/A	325 / 40 G's	305 / 40 G's	280 / 40 G's	170 / 18 G's	140 / 14 G's
High 1 Extract RPM / G-Force	534/85 G's	500/85 G's	475 / 85 G's	445 / 85 G's	410 / 85 G's	375 / 86 G's	340 / 85 G's
High 2 Extract RPM / G-Force	685/140 G's	641/140 G's	610 / 140 G's	575 / 140 G's	525 / 140 G's	480 / 141 G's	435 / 140 G's
High 3 Extract RPM / G-Force	1080 / 347 G's	1011 / 348 G's	960 / 345 G's	900 / 345 G's	825 / 348 G's	715 / 312 G's	650 / 312 G's
Recommended Electrical Service*	15 amps	15 amps	15 amps	15 amps	40 amps	60 amps	70 amps
Net Weight (kg)	550 lb. (250)	700 lb. (318)	1212 lb. (500)	1600 lb. (727)	3000 lb. (1362)	4000 lb. (1818)	7800 lb. (3540)
DIMENSIONS							
A - Overall Width (mm)	29" (737)	32" (813)	35" (889)	39" (991)	46.5" (1181)	71" (1803)	77.06" (1957)
B - Frame Width (mm)	27" (1086)	30" (762)	32.9" (836)	37" (940)	44.5" (1130)	62" (1575)	72" (1829)
C - Overall Depth (mm)	32.8" (833)	37" (940)	39.05" (992)	42.5" (1080)	50" (1270)	61" (1549)	80.2" (2037)
D - Frame Depth (mm)	27.93" (709)	32.13" (816)	38" (965)	39.9" (1013)	48.5" (1232)	59" (1499)	78.69" (1999)
E - Overall Height (mm)	46" (1168)	48.5" (1232)	55.4" (1408)	59.6" (1513)	70.1" (1781)	75" (1905)	82" (2083)
F - Height of Door Bottom (mm)	17.3" (439)	17" (432)	22" (559)	23" (584)	30.1" (765)	28.3" (718)	30.9" (784)

* Recommended electrical service based on 208-240/60/3, Consult factory for other voltages.

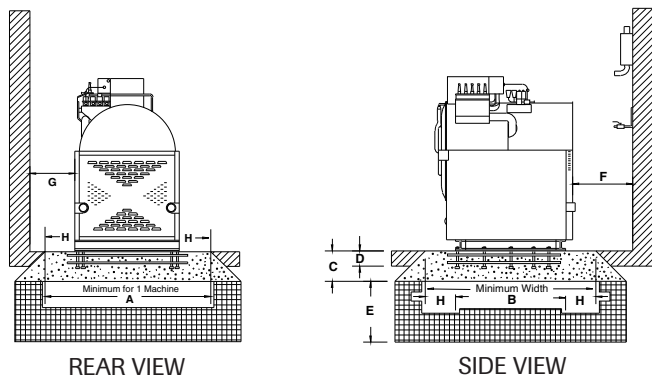


Components:

1. Supply Compartment
 2. Controls
 3. Cold Water Inlet
 4. Hot Water Inlet
 5. Vacuum Breaker
 6. Electrical Connection
 7. Drain Outlet
 8. Reuse Drain Outlet (optional)
- Drain & Reuse Drain are reversed on UF135 and UF250.

Foundation Requirements for UC & UW Models

Foundation Dimensions	UC Model Washer-Extractors					UW Model Washer-Extractors			
	UC18	UC27	UC35	UC50	UC80	UW35PV	UW60PV	UW80 & UW100	UW125
A - Foundation Length (mm)	34" (864)	37" (940)	38" (965)	42" (1067)	54" (1372)	48" (1219)	60" (1524)	66" (1676)	72" (1829)
B - Foundation Width (mm)	34" (864)	41" (1041)	42" (1067)	46" (1168)	60" (1524)	54" (1372)	60" (1524)	68" (1727)	72" (1829)
C - Foundation Thickness (mm)	4" (102)	4" (102)	4" (102)	4" (102)	9" (229)	12" (305)	12" (305)	12" (305)	12" (305)
D - Minimum Floor Thickness (mm)	4" (102)	4" (102)	4" (102)	4" (102)	6" (152)	6" (152)	6" (152)	6" (152)	6" (152)
E - Fill Dirt Depth (mm)	8" (203)	8" (203)	8" (203)	8" (203)	24" (610)	24" (610)	24" (610)	24" (610)	24" (610)



Components:

1. Supply Compartment
2. Controls
3. Cold Water Inlet
4. Hot Water Inlet
5. Vacuum Breaker
6. Electrical Connection
7. Drain Outlet

Foundation for washers must be of 3500 psi (minimum) reinforced concrete, bonded to existing concrete floor. DO NOT ISOLATE FOUNDATION. Fill dirt should be clean and compacted to a minimum depth shown below.

"F" = 24 inches (610 mm) for all UW's and UC80, 18 inches (457 mm) for all other UC's.

"G" = 18 inches (457 mm) for UW models, 1 inch (25 mm) for all UC models.

"H" = 9 inches (229 mm) for UW35, 12 inches (305 mm) for all other UW's, 4 inches (100 mm) for UC18-50, 6 inches (152 mm) for UC 80.

Washer Extractors- Due to continuous product improvements, design and specifications subject to change without notice. Features and certifications may vary by model. The quality management systems at all Alliance Laundry Ststems facilities have been awarded ISO 9001 certification. Agency approvals may vary depending on configuration. Consult factory for details. ETL, ETLc and CE

Drying Tumblers

	35 lb. Tumbler	50 lb. Tumbler	75 lb. Tumbler	634 Fast Dry	120 lb. Tumbler	170 lb. Tumbler
Cylinder Size (dia. x depth)	30" x 30" (762 mm x 762 mm)	37" x 30" (939 mm x 762 mm)	37" x 36" (939 mm x 914 mm)	37" x 36" (939mm x 914mm)	44" x 41" (1120mm x 1040mm)	50.75" x 42.5" (1290mm x 1080mm)
Cylinder Volume	12.27 cu. ft. (347 liters)	18.67 cu. ft. (528.8 liters)	22.40 cu. ft. (634.4 liters)	22.40 cu. ft. (634.4 liters)	36.1 cu. ft. (1022 liters)	49.7 cu. ft. (1408 liters)
Width*	31.5" (800 mm)	38.62" (981 mm)	38.62" (981 mm)	38.62" (981 mm)	46.5" (1181 mm)	53" (1350 mm)
Depth*	44.87" (1140 mm)	47" (1194 mm)	53" (1346 mm)	53" (1346 mm)	65" (1650 cm)	67" (1700 mm)
Height*	63.87" (1622 mm)**	76.62" (1946 mm)	76.62" (1946 mm)	76.62" (1946 mm)	85.5" (2172 mm)	94" (2388 mm)
Motor HP	.25 HP (x2) (non-reversing only)	.5 HP (non-reversing only)	.75 HP (non-reversing only)	1 HP (fan) .33 HP (cylinder)	1 HP (fan) .75 HP (cylinder)	3 HP (fan) .75 HP (cylinder)
Air Outlet Diameter	8" (203 mm)	8" (203 mm)	8" (203 mm)	10" (254 mm)	10" (254 mm)	12" (300 mm)
Air Flow	50 Hz: 470 CFM (222 liters/sec) 60 Hz: 470 CFM (222 liters/sec)	750 CFM (354 liters/sec)	Gas Models - 920 CFM (434 liters/sec) Electric and Steam Models - 750 CFM (354 liters/sec)	1100 CFM (518 liters/sec)	1600 CFM (755 liters/sec)	2450 CFM (1156 liters/sec)
BTU's/hour	Gas Models - 90,000 (26.4 kW)	Gas Models - 120,000 (35.1 kW)	Gas Models - 165,000 (48.3 kW)	215,000 (63 kW)	Gas Models - 300,000 (87.9 kW)	Gas Models - 395,000 (115.7 kW)
Utility Connection	Gas Models - .5" NPT Steam Models - .75" NPT	Gas Models - .5" NPT Steam Models - .75" NPT	Gas Models - .5" NPT Steam Models - .75" NPT	.75" NPT	.75" NPT	1" NPT
Net Weight (approx.)	363 lb. (165 kg)	545 lb. (247 kg)	615 lb. (279 kg)	710 lb. (323 kg)	Gas Model - 1275 lb. (580 kg) Steam Model - 1375 lb. (625 kg)	Gas Model - 1575 lb. (716 kg) Steam Model - 1675 lb. (761 kg)

* Allow a minimum of 24 inches behind all models for service access. Consult UniMac for minimum clearances.

**Also available in optional heights of 72.25" (1835 mm) and 76.25" (1937 mm).



Certain approvals apply to certain models.

Topload Washers, Dryers and Stacked Dryers

UniMac offers a full line of topload washers, dryers and stacked dryers for the on-premises application. The UniMac topload has an adjustable water level designed to conserve water and utility costs. The dryer features an extra large 7.0 cu. ft. capacity that handles sizeable wash loads. The UniMac stacked dryer cuts space in half, enabling you to install two commercial quality small dryers in the space of one.

Notes:

Dimensions shown are for planning purposes only. For exact electrical requirements and dimensions in critical access applications contact UniMac. In view of UniMac's policy of continued improvement, the company reserves the right to change the specifications and appearance without notice.

Laundry Planning and Engineering Handbook

This book contains detailed laundry planning information, equipment and installation specifications, sizing formulas and more. To receive a free copy call 1-800-587-5458.

Call 1-800-587-5458 For More Information On UniMac Products.

www.uniwash.com

Alliance Laundry Systems
Shepard Street, Ripon, WI 54971 Telephone: 1-800-587-5458

